

PRIMAX

**PRODUCT
PERFORMANCE
PRIDE**

MOBILE BATCHING PLANT

[REVERSIBLE MIXER]

THE COMPLETE SOLUTION
FOR CONCRETING



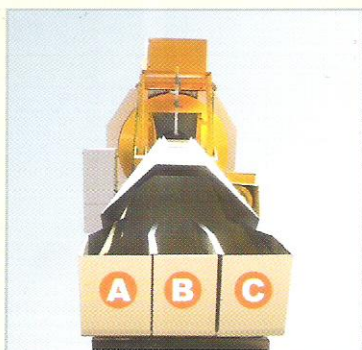
9, 12 & 15 Cu. M. /Hr

An ISO 9001 : 2008 Company

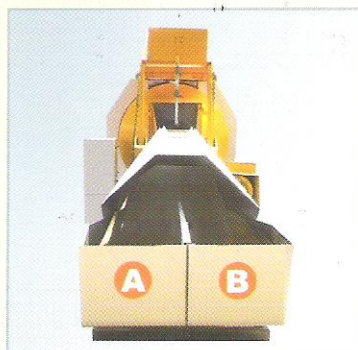
Designed with uncompromising quality to achieve high performance, deliver the requirement of concrete-conforming to IS 456 2000. Compact design for easy transportation, handling and shifting.



Various weighing options to give more accuracy of aggregate, sand & cement



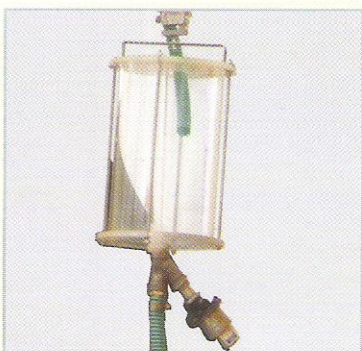
Three bins facilitates for weighing aggregates & sand simultaneously



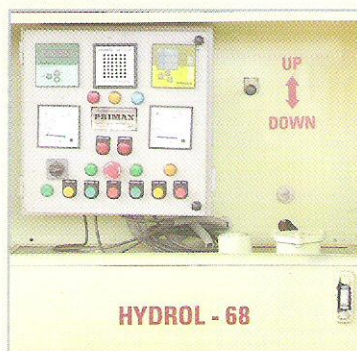
Two bins aggregates & sand are individually weighted parallelly



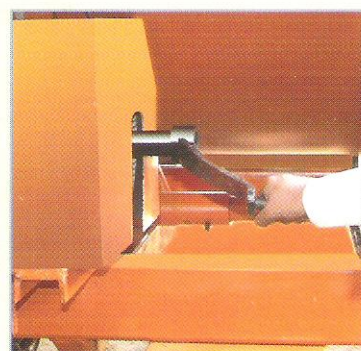
Single bin aggregates & sand are weighted



Options for various models
Automised Digital Admixture Feeding System.



Automised Water & Admixture feeding control
The system enhances the quality of concrete by accurate mixing water & admixture.



Manual handle for concrete discharge
Additional feature: Manual handle is provided for rdisharge of concrete in case of power fallure.



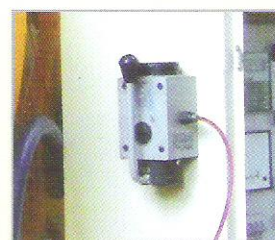
Chassis is made out of hollow, square and rectangular section for long life



Heavy duty gear box is provided specifically for avoiding the entire wear & tear of transmission system

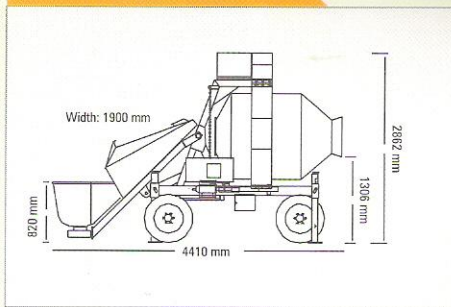


Drum Gear Ring made with special type steel for increased durability

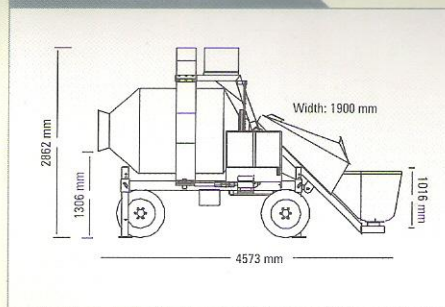


Manual Lubricating Pump for centralised lubricating system

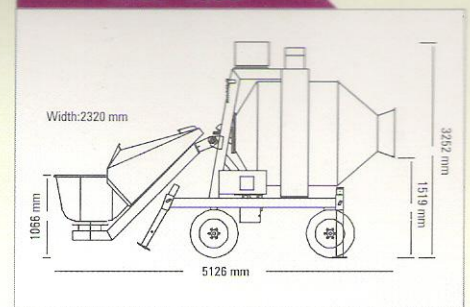
MBP 500



MBP 800



MBP 1050



Features

To get the consistent quality of cement concrete all ingredients like cement, sand, metal, water and additive chemicals are measured and mixed per batch.

Electronic load cell system is attached to skip and indication of weight to a accuracy of $\pm 2\%$ of the quantity (IS 456:2000.10.2) is displayed on a digital display unit fixed on panel.

In line water flow meter is fitted for measurement of water which indicates quantity of water added to the batch and the feeding quantity is controlled by presets switch.

With reversible action loading from one end and after mixing unloading from other end becomes easy and time saving. It also helps loading and measuring for the next batching while mixing.

Water being added when the materials is loaded in drum through skip.

The drum height at unloading point is so adjusted that it mixed concrete gets unloaded directly in concrete pump inlet.

Operating the plant is very easy.

The up and down operation of Hydraulic skip/hopper is done through a lever.

Push buttons are provided for forwarding and reversing the drum.

For instant stoppage of drum, a red emergency knob is provided.

To add water manual and auto operation switches are provided on the panel.

For best mixing result reverse drum mixer is used.

Auto Water Control Meter and other options are provided Inbuilt μ c Weighing System-Load cell based digital display for more accuracy of aggregate sand & cement

Technical Features

We offer latest technology at your doorstep

| Specification | MBP 500 | MBP 800 | MBP 1050 |
|-------------------------|---|---|--|
| Hopper Capacity | 550 Litres | 800 Litres | 1050 Litres |
| Batch Capacity | 400 Litres (0.4 cum) | 600 Litres (0.6 cum) | 750 Litres (0.75 cum) |
| Machine Output | 7-9 Cu.M./hr. | 10- 12 Cu.M./hr. | 12-15 Cu.M./hr. |
| Power | 10 HP (7.5 KW) Electric Motor | 15 HP (11 KW) Electric Motor | 20 HP (14 KW) Electric Motor |
| Water Tank Capacity | 100 Litres | 120 Litres | 150 Litres |
| Weighing System | Load Cell based weighing system with digital display | Load Cell based weighing system with digital display | Load Cell based weighing system with digital display |
| Water Pump | Self priming mono-set type | Self priming mono-set type | Self priming mono-set type |
| Hopper Lifting | Hydraulic | Hydraulic | Hydraulic |
| Hydraulic Pump | 16 lpm @ 200 bar | 16 lpm @ 200 bar | 20 lpm @ 200 bar |
| Hydraulic Oil Tank | 40 litres | 60 litres | 90 litres |
| Drum Gear Ring & Roller | Accurately machined drum gear assembly (made with special type steel) for transmission drive with heavy duty rollers guide for increased durability | Accurately machined drum gear assembly (made with special type steel) for transmission drive with heavy duty rollers guide for increased durability | Accurately machined drum fit gear assembly (made with special type steel) for transmission drive with heavy duty twin rollers guide for increased durability |
| Wheels | 4 Nos. Pneumatic Wheels | 4 Nos. Pneumatic Wheels | 4 Nos. Pneumatic Wheels |
| Jack Levelling | Pin Type (4 Nos.) | Pin Type (4 Nos.) | Pin Type (4 Nos.) |
| Overall Dimensions | L-4410 x W-1900 x H-2862 | L-4573 x W-1900 x H-2862 | L-5126 x W-2320 x H-3252 |
| Weight (approx.) | 2500 Kg | 2600 Kg | 2900 Kg |
| Logistic - | | | |
| 20' Container | 1 open top container | 1 open top container | 1 open top container |
| 40' Container | 3 in high cube | 3 in high cube | 3 in high cube |

Options for various models Batch Printing System



◀ Pneumatic Feeding System

Aggregate 1,2 and sand can be used to feed any MBP Models with the help of pneumatic feeding system.



▶ Pouring in the Concrete Pump

PRIMAX Reversible Mixers can be used in Concrete Pump as per requirement. At a time 2 Nos. 12 cuM/Hr (MBP 800) Model units to be installed with Concrete Pump (Middle portion) for higher volume concrete production.

Shifting of concrete through Tower Crane

The concrete from the **PRIMAX MBP800** can be taken into the special type bucket for quick shifting of the concrete as per optimum height for high rise buildings and bridges.

Transportation on Wheel

The height of the unit is designed in such a way that it can directly discharge the concrete in tractors / dumpers.

Pouring of the concrete in Transit Mixer PRIMAX

MBP800 Reversible Mixer can directly discharge the concrete at a height of 3.5 meter to 4 meter (approx.) through conveyor belt.

Exports

**PRIMAX Reversible Mixer
supplied to overseas buyer**



Service & Network

PRIMAX has a network of offices, authorised representatives at key locations and customer bases. Our service engineers and spare parts are made available in the quickest possible time, ensuring minimum break down time.

Primax
EQUIPMENT PVT. LTD.

Head office:

12A, Netaji Subhas Road, Ground Floor, Kolkata -700 001, India

Phone: 2230 9544, 2230 2756, 2230 3188. Fax: (033)22309544/3188

E-mail: info@primaxgroup.com, sales@primaxgroup.com, primax@dataone.in

Plant: Mumbai Road, Domjur, Howrah- 711411, W.B.

www.primaxgroup.com www.primaxgroup.in

Our Network:

Bihar, Orissa, Chattisgarh, Jharkhand, A.P., Tamilnadu, Karnatak, M.P., Maharastra, Sikkim, Assam, Meghalaya, Manipur, Mizoram, Nagaland, Tripura, Andaman